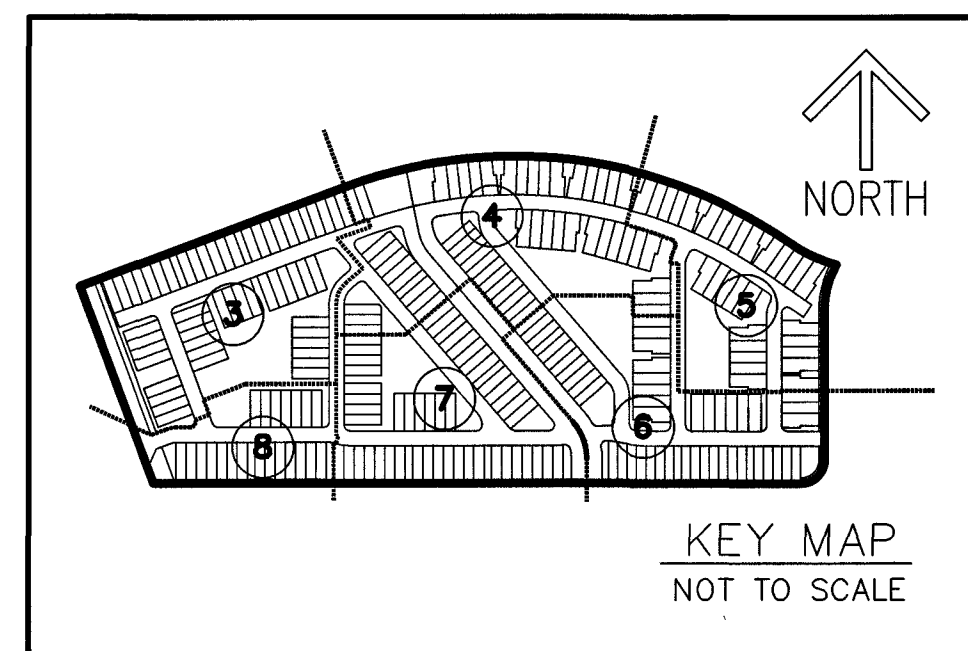


THIS INSTRUMENT PREPARED BY
 RONNIE L. FURNISS
 OF
CAULFIELD and WHEELER, INC.
 SURVEYORS - ENGINEERS - PLANNERS
 7900 GLADES ROAD, SUITE 100
 BOCA RATON, FLORIDA 33434 - (561)392-1991
 CERTIFICATE OF AUTHORIZATION NO. LB3591
 JULY 2024

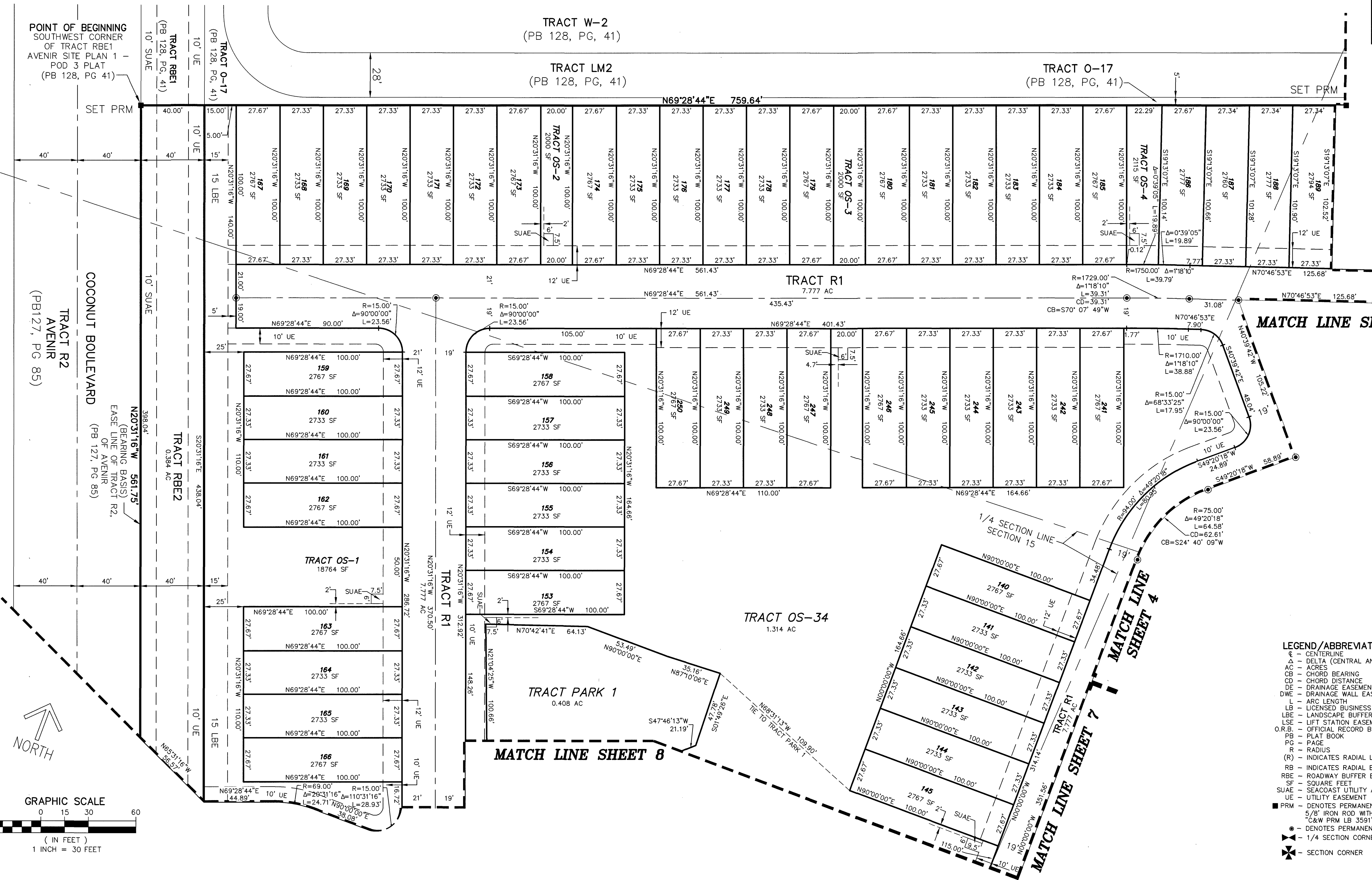
AVENIR - PARCEL B TOWNHOMES

BEING A REPLAT OF A PORTION OF PARCEL A-3, AVENIR, AS RECORDED IN
 PLAT BOOK 127 PAGE 85, OF THE PUBLIC RECORDS OF PALM BEACH COUNTY,
 FLORIDA LYING IN SECTION 15, TOWNSHIP 42 SOUTH, RANGE 41 EAST, CITY OF
 PALM BEACH GARDENS, PALM BEACH COUNTY, FLORIDA.



158

SHEET 3 OF 8



MATCH LINE SHEET 4

MATCH LINE SHEET 4

MATCH LINE SHEET 8

MATCH LINE SHEET 7

- LEGEND/ABBREVIATIONS**
- CL - CENTERLINE
 - Δ - DELTA (CENTRAL ANGLE)
 - AC - ACRES
 - CB - CHORD BEARING
 - CD - CHORD DISTANCE
 - DWE - DRAINAGE EASEMENT
 - DW - DRAINAGE WALL EASEMENT
 - L - ARC LENGTH
 - LB - LICENSED BUSINESS
 - LBE - LANDSCAPE BUFFER EASEMENT
 - LSF - LIFT STATION EASEMENT
 - O.R.B. - OFFICIAL RECORD BOOK
 - PB - PLAT BOOK
 - PG - PAGE
 - R - RADIUS
 - (R) - INDICATES RADIAL LINE
 - RB - INDICATES RADIAL BEARING
 - RBE - ROADWAY BUFFER EASEMENT
 - SF - SQUARE FEET
 - SUA/E - SEACOAST UTILITY AUTHORITY EASEMENT
 - UE - UTILITY EASEMENT
 - PRM - DENOTES PERMANENT REFERENCE MONUMENT
 - 5/8" IRON ROD WITH CAP STAMPED "C&W PRM LB 3591"
 - - DENOTES PERMANENT CONTROL POINT
 - ⊕ - 1/4 SECTION CORNER
 - ⊗ - SECTION CORNER